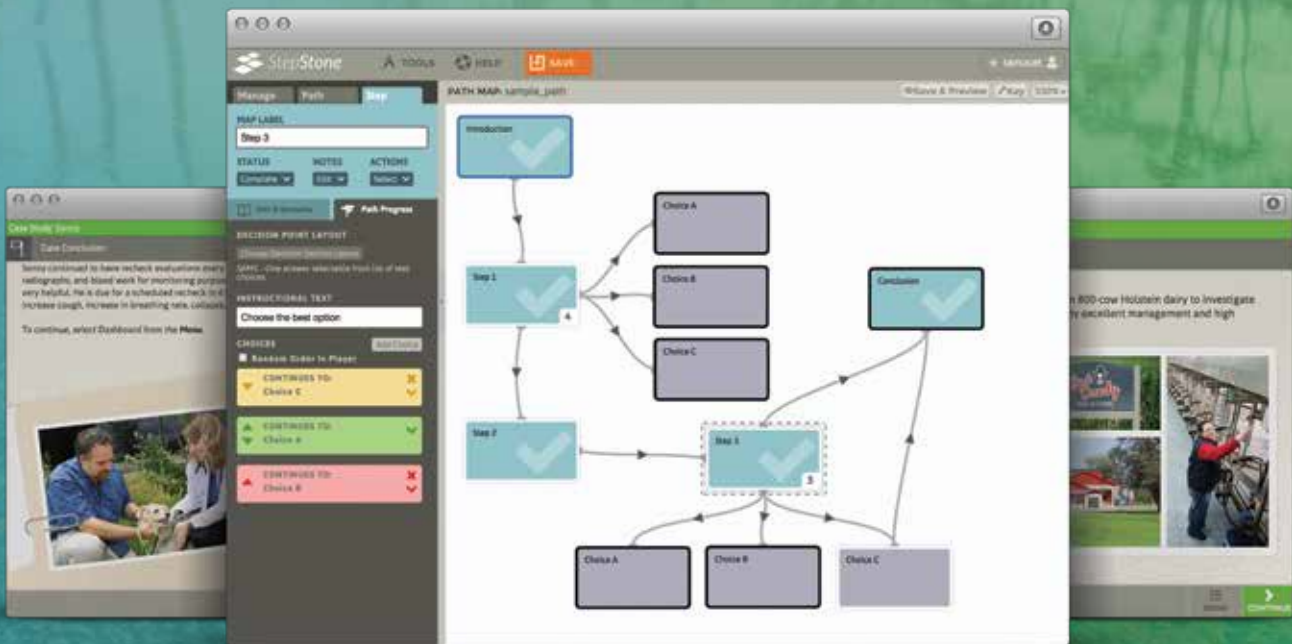




StepStone

A new path for teaching
with technology.



Create your own e-learning modules quickly and easily with our web-based authoring solution. StepStone allows faculty to produce interactive, media-enriched learning resources that will take your teaching to the next level.



The CENTER for
EDUCATIONAL TECHNOLOGIES



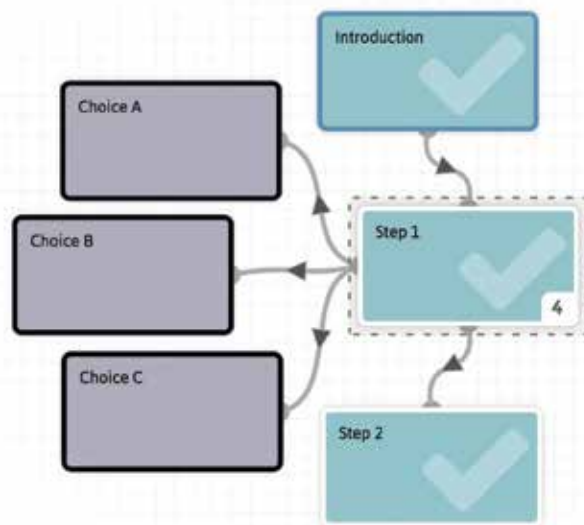
TEXAS A&M UNIVERSITY
Veterinary Medicine
& Biomedical Sciences

Authoring with StepStone

Start with an Introduction and Conclusion, then add Steps to construct a unique Learning Path. A Path can be anything from a simple informative sequence to a comprehensive narrative journey.

Map your entire Learning Path and add content later or author one Step at a time. Integrated notes and status markers help you keep track of progress and development ideas.

Frame your content with an expanding library of layouts and presentation formats. Use the Media Manager to add images, rich text documents and streaming video. Select preview mode to view a real-time simulation of the learner experience on a variety of devices.



Learning with StepStone

Publish a standards-based, responsive HTML5 learning package for desktop, tablet and mobile devices.

Enrich Learning Paths with interactive components and supplemental resources, including:

- High resolution image zooming
- Streaming HD video
- Dynamic Multimedia Clipboard

Apply branching pathways to encourage exploration or impose consequences using an assortment of behaviors and feedback triggered by learner decisions.

Motivate learners toward completion with an optional achievement system that can unlock content and reward accomplishments.

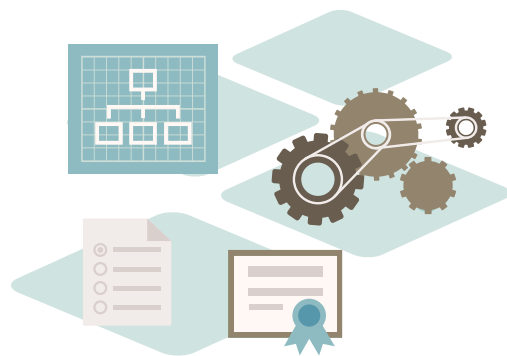


Teaching with StepStone

Bundle one or more Learning Paths into a complete course using the Publisher tool.

Deploy the SCORM 1.2 compliant course on your LMS for efficient course management.

Track learner activity, progress, and completion through graded post-course assessments, satisfaction surveys and downloadable certificates.



The Center for Educational Technologies
Located at the College of Veterinary Medicine
& Biomedical Sciences at Texas A&M University
1-979-458-8450 ■ WWW.TAMUCET.ORG

For more information or to try a demo,
connect with us at CET@cvm.tamu.edu

How to Access this Content

1

Fill out our Contact Form

If you are interested in accessing any of the Center for Educational Technologies' educational resources, please fill out the form at www.tamucet.org/contact.

2

Connect with our Team

After receiving your information through the Contact Form, a member of the Center for Educational Technologies team will connect with you to provide more information and give you access to a demo of the requested resources.

Facts About our Educational Resources:

- Educational Resources are available for license via a 12-month subscription license agreement for an unlimited number of faculty and students.
- All resources are web-based, managed through the Center for Educational Technologies' learning management system, and accessible across multiple devices. No download necessary!

3

License Agreements and Payments

At the end of the demo period, a license agreement would be signed by both institutions and payment would be submitted.

FAQs About License Agreements and Payments:

Q: What is a subscription license agreement?

A: A legal agreement between two parties to access learning modules that Texas A&M owns the intellectual property to. All learning modules are licensed for a set fee as outlined on the tamucet.org website.

Q: How long is a subscription license agreement?

A: License agreements are for 12-months.

Q: How do I renew a subscription license agreement?

A: Annual renewal reminders are emailed to licensees prior to the license agreement termination date. Licensees may also request renewals via email to the Center for Educational Technologies at cet@cvm.tamu.edu

Q: What happens if I choose to terminate my subscription license agreement prior to the end of the 12-month period?

A: A thirty (30) days written notice prior to the end of the then-current term of its intent not to renew is required.

4

Set-up and Support

The Center for Educational Technologies will set up your unique institution URL with your custom branding and trademark. Login credentials and account setup instructions will be provided for your students and faculty. HelpDesk Support will be provided for the length of the license agreement

5

Login and Begin Learning!

