



VETERINARY PREVENTIVE HEALTHCARE CURRICULUM



The AAVMC Primary Care Veterinary Educators (PCVE) and Partners for Healthy Pets (PHP) have partnered to create an online, modular curriculum about the importance of small animal preventive veterinary care. The program is freely available to all Association of American Veterinary Medical Colleges (AAVMC) members for use in their curricula. The program has been divided into five modules with the following features:



Reporting

- Robust reporting features including the ability to track learner activity, progress and completion
- Activities have been mapped to competencies of the AVMA Council on Education and the AAVMC Competency-Based Veterinary Education framework



Curriculum

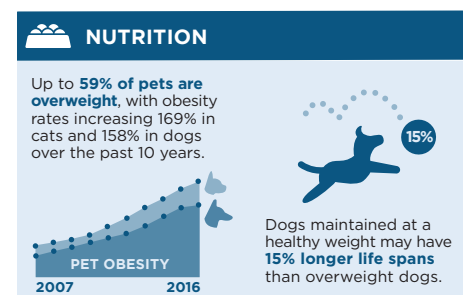
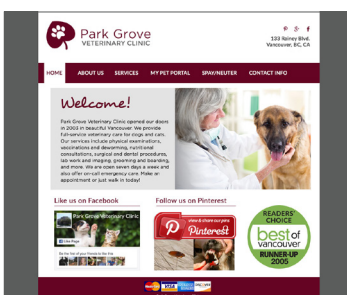
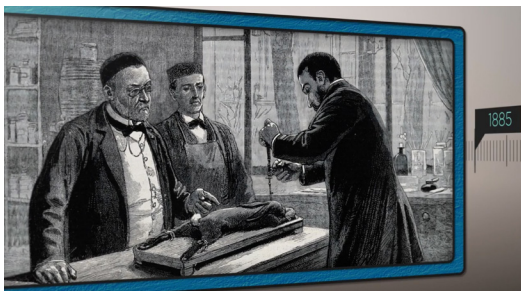
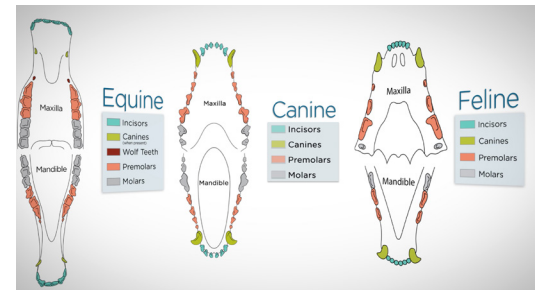
- Adaptive modules so faculty can select components that best fit their curriculum
- Inclusion of communications and social media content
- Each module contains an online portion and an in-class portion
- In-class components consist of student-centered, active-learning activities



User Experience

- Customized website for each CVM
- Online technical support available for students
- Online and telephone technical support available for faculty

STAGE	CLINICAL SIGNS	ATTACHMENT LOSS	ULCER DEPTH	DISEASE STATE	MANAGEMENT	REMARKS
0 (Healthy)	None	None	N/A	N/A	• Professional dental cleaning • Home care	All dentures, continuous monitoring
1 (Stomatitis)	• Calculus • Gingival inflammation	None	Stage 1: 0.5 mm Stage 2: 0.5 mm	Reversible	• Professional dental cleaning • Daily home care	Annually after professional dental cleaning
2 (Early Periodontitis)	• Calculus and gingivitis • Bleeding on probing	< 25%	Stage 1: 4.0 mm Stage 2: 4.0 mm	Irreversible	• Root planning during professional dental cleaning	4 - 6 months
3 (Moderate Periodontitis)	• Heavy calculus and gingivitis • Bleeding and pus on probing	25 - 50%	Stage 1: 5.0 mm Stage 2: 5.0 mm	Irreversible	• Aggressive therapy • Root planning during professional dental cleaning	2 - 4 months
4 (Severe Periodontitis)	• Severe calculus, gingivitis and gingival recession • Bleeding and pus on probing	> 50%	Stage 1: 6.0 mm Stage 2: 6.0 mm	Irreversible	• Aggressive therapy • Root planning during professional dental cleaning	2 - 4 months



Topics and learning outcomes are mapped to AAVMC-CBVE competencies:



MODULE 1 Introduction

1.1	1.2	1.3	1.4	1.6	2.2	4.1	4.2	5.1	5.2	6.2	6.4	7.3	7.4	9.1	9.3
			✓		✓			✓	✓	✓	✓	✓	✓		

Designed to help students recognize the importance of preventive healthcare, and its importance to a primary care veterinary practice and its clients. Includes the history of preventive care, the importance of preventive care, and basic client communication skills.



MODULE 2 Vaccines & Parasites

1.1	1.2	1.3	1.4	1.6	2.2	4.1	4.2	5.1	5.2	6.2	6.4	7.3	7.4	9.1	9.3
		✓		✓	✓	✓	✓	✓	✓					✓	✓

Designed to provide students the opportunity to utilize appropriate resources to make informed decisions, recognizing that protocols will vary based on geography and other factors. Includes risk variables for vaccines and parasites, and specific client communication techniques.



MODULE 3 Dentistry

1.1	1.2	1.3	1.4	1.6	2.2	4.1	4.2	5.1	5.2	6.2	6.4	7.3	7.4	9.1	9.3
✓	✓				✓			✓	✓						

Designed to provide an introduction to dentistry and the opportunity to master core concepts through visual activities. Includes numbering teeth, performing an oral exam, and staging periodontal disease.



MODULE 4 Nutrition

1.1	1.2	1.3	1.4	1.6	2.2	4.1	4.2	5.1	5.2	6.2	6.4	7.3	7.4	9.1	9.3
✓		✓		✓	✓			✓		✓				✓	✓

Designed to provide an introduction to nutrition and the opportunity to reinforce concepts through practice cases. Includes nutritional guidelines, BCS and MCS, and energy requirement calculations.



MODULE 5 Reduced Stress Veterinary Visits

1.1	1.2	1.3	1.4	1.6	2.2	4.1	4.2	5.1	5.2	6.2	6.4	7.3	7.4	9.1	9.3
✓					✓			✓	✓						

Designed to provide an introduction to animal behavior and low-stress handling.



VETERINARY PREVENTIVE HEALTHCARE CURRICULUM

For More Information:

Dr. Raelynn Farnsworth
Clinical Associate Professor
Community Practice
Washington State University
raelynn@wsu.edu