

# Hematology

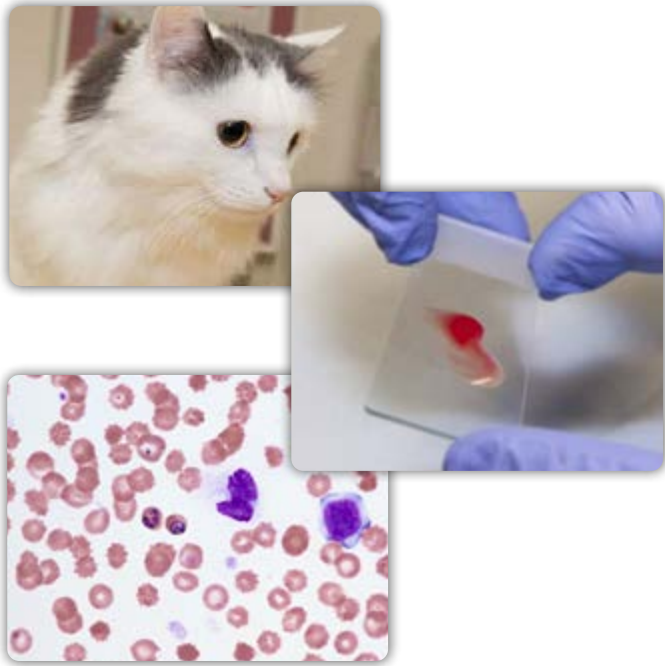
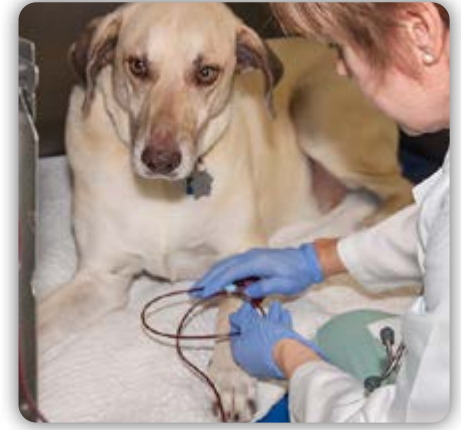
## COURSE PACKAGE



This seven-module course package is designed to support learners interested in further developing their understanding of how to diagnose and suggest treatment for different hematological conditions with the support of peripheral blood smears.

# Accelerate Student Learning

Bleeding is a common clinical presentation in companion animals, and many practitioners struggle to interpret hematologic data and formulate appropriate diagnostic plans for affected patients. Using real-world case studies, learners will recognize the major causes of bleeding, develop a diagnostic and treatment plan, and select and administer appropriate blood products for the patients. An additional interactive learning module will discuss the basics of how to prepare and examine a peripheral blood smear, with a focus on important erythrocyte abnormalities that can help shape differential diagnoses in an emergency setting.



## What's Included

### Case Studies

Hematology (*Contact time: 3.0 hours*)

- Barkley - Iron Deficiency Anemia
- Andie - Immune-mediated Hemolytic Anemia
- Sydney - Immune-mediated Thrombocytopenia
- Finny - Blood Loss Anemia
- Cuzco - Mycoplasma haemofelis
- Freddie - Ehrlichia canis

### Learning Module

Evaluating Blood Smears and Analyzing Erythrocyte Morphology (*Contact time: 1.0 hour*)

### Instructor Tools

All modules include an assessment pack that can be utilized to support formative or summative assessment of students.

## Audience & Delivery

Designed to complement: Small Animal Medicine, Hematology, Emergency Medicine and Clinical Rotations

Web-based HTML5 content streams directly to students via password protected learning management system. Runs on PC, MAC, and Tablet-devices.

## About the Authors

**Audrey Cook**, BVMS, DABVP (Feline), DACVIM (SAIM), DECVIM

**Jessica A. Hokamp**, DVM, PhD, DACVP (Clinical Pathology)



The Center for Educational Technologies  
Located at the School of Veterinary Medicine  
& Biomedical Sciences at Texas A&M University  
1-979-458-8450 ■ WWW.TAMUCET.ORG

For more information or to try a demo,  
connect with us at [CET@cvm.tamu.edu](mailto:CET@cvm.tamu.edu)