

Hypothalamus- Pituitary Axis

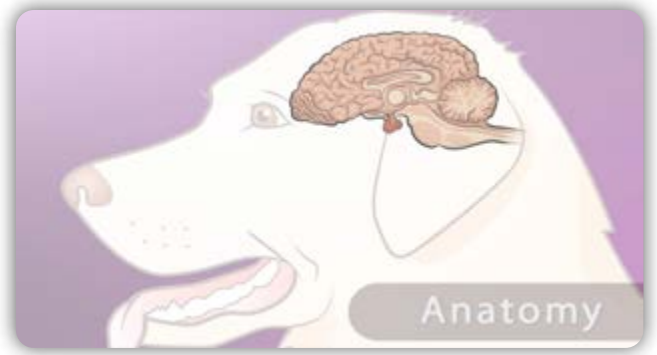
INSTRUCTIONAL RESOURCES



These instructional resources introduce learners to the Hypothalamus-Pituitary-Target Organ axis. Designed to be utilized with a blended learning or flipped classroom approach, this engaging material is built around a humorous restaurant analogy to help learners master this challenging physiological concept.

Accelerate Student Learning

These instructional resources are designed to help veterinary students learn how the hypothalamus-pituitary axis organ functions and the different diseases that can be associated with it. This video-based module leverages bright illustrations to explain key ideas and compare this challenging concept to an environment that learners are familiar with.



What's Included

Learning Module

This module is designed around a series of videos that expands on the Hypothalamus-Pituitary-Target Organ axis by focusing on the following topic areas:

- Adrenal Gland
- Hypoadrenocorticism (Addison's Disease)
- Hyperadrenocorticism (Cushing's Disease)
- Hyperaldosteronism

Instructor Tools

All modules include an assessment pack that can be utilized to support formative or summative assessment of students.

Audience & Delivery

Suitable for veterinary students at any level of study.

Web-based HTML5 content streams directly to students via password protected learning management system.

Runs on PC, MAC, and Tablet-devices.

About the Authors

Shannon Washburn, DVM, PhD

Audrey Cook, BVMS, DABVP (Feline), DACVIM (SAIM), DECVIM

Carly Patterson, DVM, DACVIM



The Center for Educational Technologies
Located at the School of Veterinary Medicine
& Biomedical Sciences at Texas A&M University
1-979-458-8450 ■ WWW.TAMUCET.ORG

For more information or to try a demo,
connect with us at CET@cvm.tamu.edu