

The Center for Educational Technologies 2023

The Center for Educational Technologies (CET) specializes in developing education programs, trainings and outreach activities which compliment technical experts' research activities. Many external sponsors request that researchers' scientific findings be disseminated through education and outreach programs. This is where the CET's faculty can step in. By partnering with the CET, researchers can focus on their technical expertise, while CET faculty translates your research into training programs and disseminating findings to the general public. The CET offers online hosting services for websites and virtual learning. The CET has a state-of-the-art video production studio on campus, video equipment to film on-location, and equipment to film on-the-go, such as with GoPros. The CET has worked with industry, academic and government research partners on both public and private grants. For more information go to: www.tamucet.org.



Research

~\$1M in new awards



Instruction

Held 120 trainings & Developed 15 educational resources



Entrepreneurship

~\$235K in new service contracts and license agreements

The CET works collaboratively with other university entities, state, federal, and global agencies, other colleges of veterinary medicine, non-governmental agencies, and industry to provide access to innovative and engaging educational resources any-time and in any place. The approach has led to the CET's international reputation for excellence in developing curricula programs and outreach programs.

Key Partners

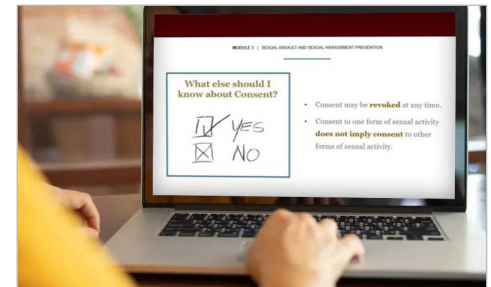
- 3D MediaVision
- 100 Ranchers Inc.
- Leader Healthcare Group
- National Institutes of Health
- Prairie View A&M University
- United States Department of Agriculture
- VetEducator
- VetFolio
- West Texas A&M University

Institutions Using CET Resources

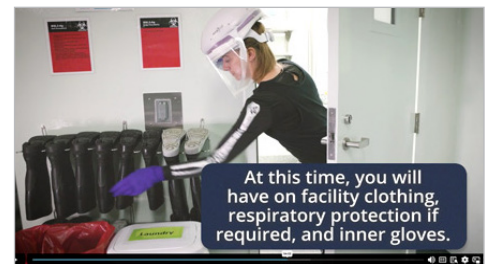
- Ohio State University
- Missouri State University
- Kansas State University
- Colorado State University
- Purdue University
- Virginia Tech
- Washington State University
- Western University, California
- Louisiana State University
- Mississippi State University
- Oklahoma State University
- UC Davis
- University of Illinois
- Minnesota State University
- Ross University
- Tennessee State University
- Lincoln Memorial University
- North Carolina State University
- Florida State University
- Tufts University
- University of Wisconsin-Madison
- Midwestern University, Illinois
- Cornell University
- Oregon State University
- University of Arizona
- Atlantic Veterinary College, Canada
- Western College of Veterinary Medicine, Canada
- Royal Veterinary College, London



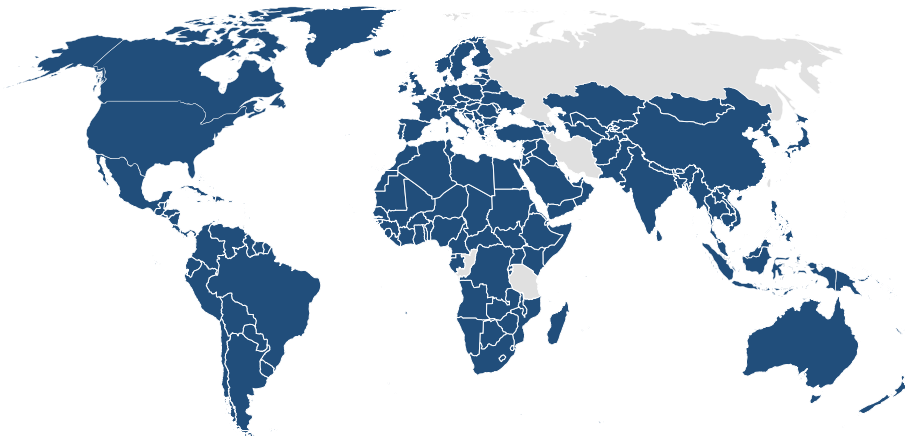
CET launches HowdyPartner.org extension program to create partnerships between Texas producers & veterinarians



CET launches course on Mental Health and Sexual Assault to 22,000 Texas A&M undergraduates



CET supports faculty research activities.



With partnerships and learners from all over the world, the CET's work has a growing global impact.



The CENTER for
EDUCATIONAL TECHNOLOGIES



TEXAS A&M UNIVERSITY
Veterinary Medicine
& Biomedical Sciences