

# On-Demand Continuing Education



Explore our dynamic library of interactive, online learning resources and case studies where you can review foundational knowledge and apply your understanding within real-world scenarios. These discipline-specific materials will help equip you with the knowledge and tools necessary to respond and deliver care across different clinical environments. Whether you are a current student, veterinary technician or licensed veterinarian, there is something for everyone. Don't hesitate to begin your learning



The Center for Educational Technologies  
Located at the School of Veterinary Medicine  
& Biomedical Sciences at Texas A&M University  
1-979-458-8450 [WWW.TAMUCET.ORG](http://WWW.TAMUCET.ORG)



TEXAS A&M UNIVERSITY

**Veterinary Medicine  
& Biomedical Sciences**

# On-Demand Continuing Education Available To You



CREDITS: 4  
PRICING: \$99

## Acute Kidney Injury Adaptive Case Studies

Adaptive case studies where learners progress through four levels of cases on diagnosing and managing feline and canine acute kidney injury.



CREDITS: 1  
PRICING: \$50

## Animal Physical Exam Instructional Videos

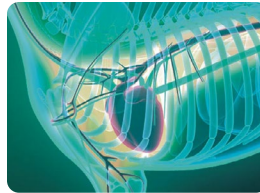
Physical exam instructional videos on equine, canine, feline, small ruminant, bovine, and camelid.



CREDITS: 4  
PRICING: \$49

## Antimicrobial Resistance

This collection of online resources is designed to teach students the essential knowledge, skills, and attitudes necessary to support judicious use of antimicrobials to combat antimicrobial resistance.



CREDITS: 2  
PRICING: \$79

## Cardiology Course Package

Four course study package where learners acquire fundamental skills in canine and feline cardiology and apply knowledge within example scenarios.



CREDITS: 4  
PRICING: \$99

## Chronic Kidney Disease Adaptive Case Studies

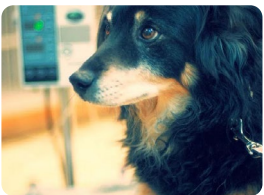
Adaptive case studies where learners progress through four levels of cases on diagnosing and managing feline and canine chronic kidney disease.



CREDITS: 4  
PRICING: \$49

## Companion Animal Decision-Making Cases

Case studies and video reflections to enhance clinical diagnosis skills and promote emotional processing.



CREDITS: 1  
PRICING: \$49

## Constant Rate Infusions (CRI) in a Veterinary Setting

Learning module discussing the physiology of pain and the pain pathway, as well as drugs commonly used for analgesia in small animals.



CREDITS: 4  
PRICING: \$99

## Dentistry Course Package

Course package with video-based modules on canine and feline dental extraction, nerve blocks, and interactive case studies on dental disease.



CREDITS: 2  
PRICING: \$79

## Dermatology Course Package

Course package designed to support learners in further developing their understanding of how to interpret dermatological data and suggest treatment for diagnosed conditions.



CREDITS: 4  
PRICING: \$79

## Hematology Course Package

Course package on how to diagnose and suggest treatment for different hematological conditions with the support of peripheral blood smears.



### Interactive Porcine GI Tract

An interactive tool for learners to explore the porcine GI tract by navigating high-resolution images.

PRICING: \$5



### Murmur Learner

Active learning module exploring cardiac auscultation in veterinary medicine that explains how murmurs and arrhythmias are generated and classified.

CREDITS: 1

PRICING: \$49



### Neuroanatomy Supplemental Instruction

A tutorial on neuroanatomy for first year veterinary students. (Does not address vestibular disease.)

PRICING: \$5

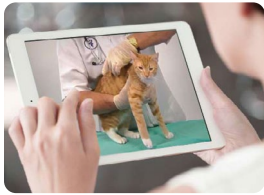


### Veterinary Technician Package

Designed to develop understanding of the proper procedures for applying bandages, preparing for surgery, conducting a feline physical examination, and calculating the dosage and rate of medications given during a constant rate infusion.

CREDITS: 3

PRICING: \$99



### Video Library

Instructional video based module exploring various topics across veterinary medicine, including Small Animal Bandaging, Medical Procedures, Physical Exam, Surgical Preparation, Surgical Procedures, Clinical Skills, Internal Medicine, Parasitology and Cardiology.

CREDITS: 4

PRICING: \$99

**ENHANCE YOUR CAREER.  
LEARN A NEW SKILL.  
SIGN UP TODAY!**

To access our Catalog of On-Demand CE Courses, please visit [Texas A&M's Continuing & Professional Education \(CPED\) platform.](#)